

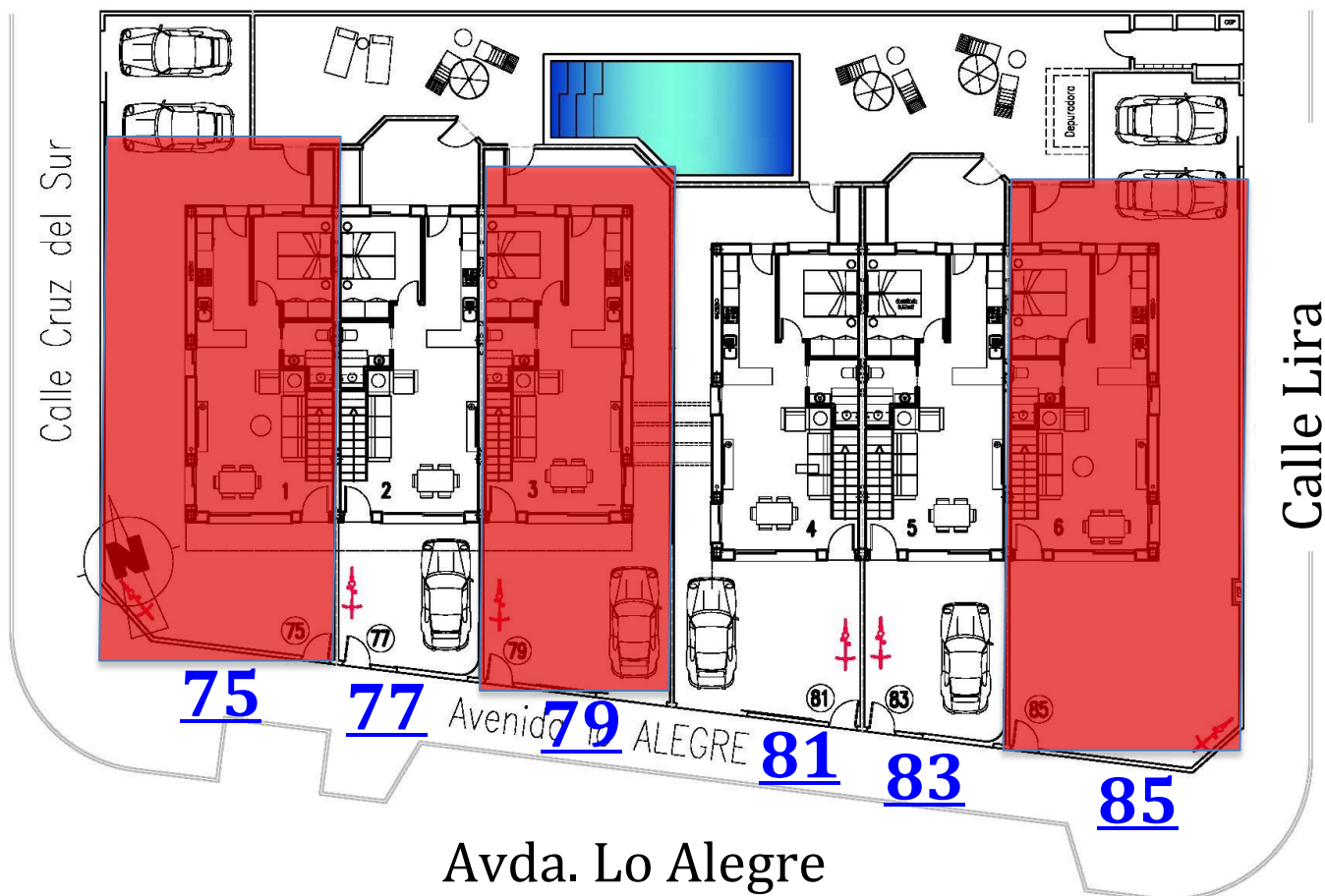


BahiaHomes Horadada3

Nº	SOLARIUM	D/B B/B	TERRAZA/ TERRACE	M² CONST.	FECHA ENTREGA	PRECIO/ PRICE
<u>75</u>	50,38 m²	4/2	108,85 m²	113,35 m²	Dic 2026	384.900€
<u>77</u>	46,04 m²	3/3	38,98 m²	106,96 m²	Dic 2026	354.900€
<u>79</u>	51,18 m²	4/2	66,73 m²	113,49 m²	Dic 2026	-----€
<u>81</u>	50,38 m²	4/2	64,38 m²	113,35 m²	Dic 2026	369.900€
<u>83</u>	46,04 m²	3/3	44,10 m²	106,96 m²	Dic 2026	354.900€
<u>85</u>	51,18 m²	4/2	126,38 m²	113,49 m²	Dic 2026	-----€

Planos provisionales sujetos a modificaciones

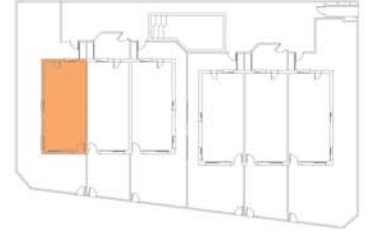
IVA no incluido / VAT not included





bahia homes
HORADADA

VIVIENDA 75



PLANTA BAJA
GROUND FLOOR



PLANTA PRIMERA
FIRST FLOOR



SOLARIUM

PLANTA BAJA 60,38 m²
PLANTA PRIMERA 51,04 m²

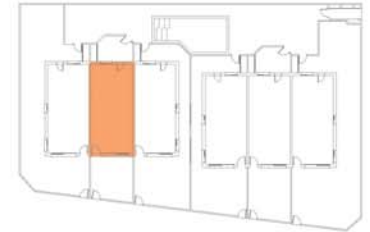
TOTAL CONSTRUIDO 113,35 m²

HORADADA - 6 DUPLEX

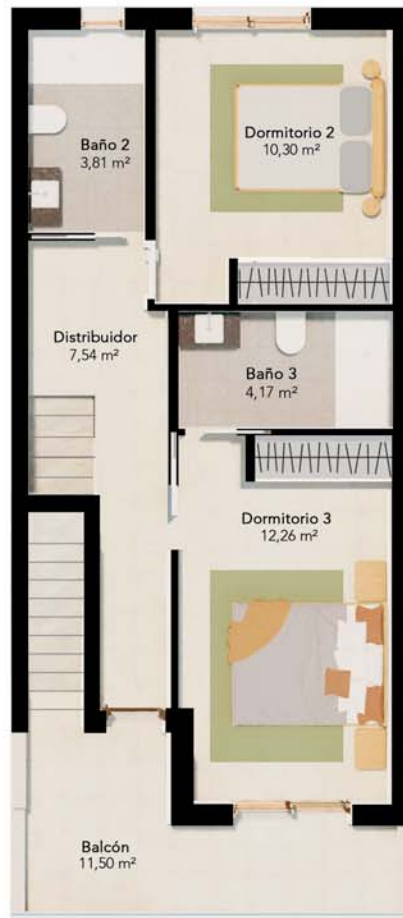


bahia homes
HORADADA

VIVIENDA 77



PLANTA BAJA
GROUND FLOOR



PLANTA PRIMERA
FIRST FLOOR



SOLARIUM

PLANTA BAJA 56,20 m²
PLANTA PRIMERA 46,83 m²

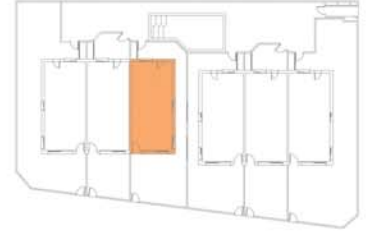
TOTAL CONSTRUIDO 106,96 m²

HORADADA - 6 DUPLEX



bahia homes
HORADADA

VIVIENDA 79



PLANTA BAJA
GROUND FLOOR



PLANTA PRIMERA
FIRST FLOOR



SOLARIUM

PLANTA BAJA 62,71 m²
PLANTA PRIMERA 51,55 m²

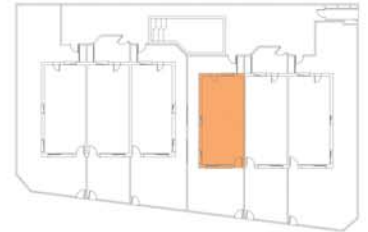
TOTAL CONSTRUIDO 114,26 m²

HORADADA - 6 DUPLEX

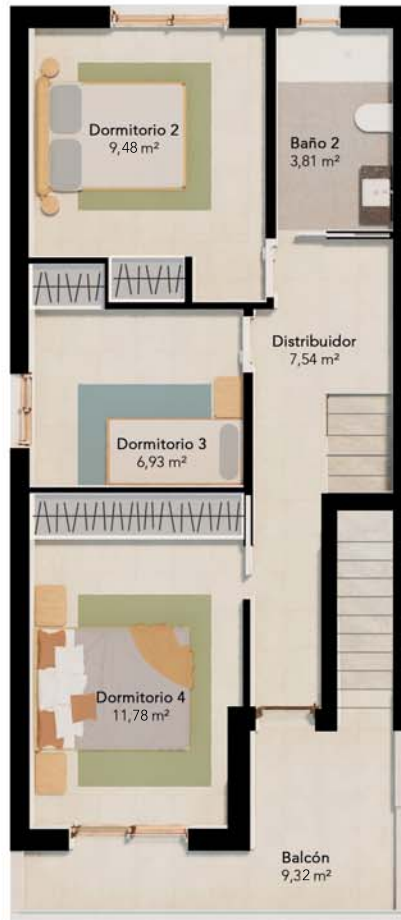


bahia homes
HORADADA

VIVIENDA 81



PLANTA BAJA
GROUND FLOOR



PLANTA PRIMERA
FIRST FLOOR



SOLARIUM

PLANTA BAJA 60,36 m²
PLANTA PRIMERA 51,04 m²

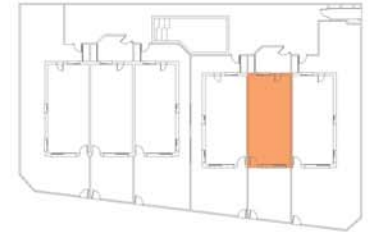
TOTAL CONSTRUIDO 113,35 m²

HORADADA - 6 DUPLEX



bahia homes
HORADADA

VIVIENDA 83



PLANTA BAJA
GROUND FLOOR



PLANTA PRIMERA
FIRST FLOOR



SOLARIUM

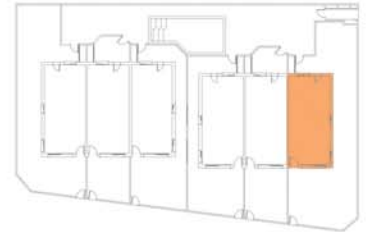
PLANTA BAJA 56,20 m²
PLANTA PRIMERA 46,83 m²
TOTAL CONSTRUIDO 106,96 m²

HORADADA - 6 DUPLEX



bahia homes
HORADADA

VIVIENDA 85



PLANTA BAJA
GROUND FLOOR



PLANTA PRIMERA
FIRST FLOOR



SOLARIUM

PLANTA BAJA 60,36 m²
PLANTA PRIMERA 51,18 m²

TOTAL CONSTRUIDO 113,49 m²

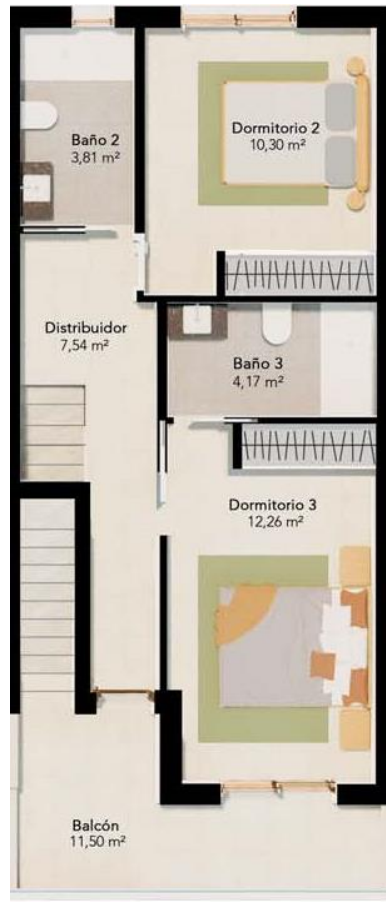
HORADADA - 6 DUPLEX



bahia homes
HORADADA



PLANTA PRIMERA
FIRST FLOOR



PLANTA PRIMERA
FIRST FLOOR



PLANTA PRIMERA
FIRST FLOOR

HORADADA - 6 DUPLEX

 Floor heating in bathrooms, living room and kitchen area.	 Pre-installation of air conditioning system by air ducts	 Reinforced front door with five lock points and crowbar-proof system.	 Communal swimming pool and jacuzzi.
 Kitchen furnished with high and low furniture. Choice of colors *.	 Outdoor LED lighting. Preinstalation of spotlights.	 Interior woodwork. White access doors and wardrobes. Fully-lined fitted wardrobes	 Encimera cocina en Silestone o similar.
 White goods. Fridge, oven, hob, extractor fan and washing machine included.	 Electricity.Niessen Zenit light switches or similar.	 Window roller shutter with thermal and acoustic insulation.	 Kitchenette in solarium.
 Bathroom vanities and mirrors.	 TV, phone and optical fiber installations.	 Aluminum carpentry with thermal bridge break, double glass and air chamber.	 Shower in solarium.
 Shower screens and shower trays.	 Installation of atherothermal system for DHW (Domestic Hot Water).	 Foundation and structure in reinforced concrete.	
 Bathroom suites. Roca in white with soft-closing.	 Painting on plaster on walls. Odorless, ecological and hypoallergenic. Termination in good sight.	 Porcelain flooring and ceramic tiles up to the ceiling, to choose *	
 Bathroom taps and thermostatic shower with adjustable bar and shower head.	 Perimeter enclosure composed of double ceramic brick and insulating.	 Stoneware terraces waterproofed with asphalt roofing felt and non-slip porcelain exterior floor tiles.	

La sociedad vendedora se reserva el derecho e efectuar en las obras las modificaciones que oficialmente le fuesen impuestas y aquellas que fuesen motivadas por exigencias técnicas, jurídicas o comerciales. Este documento no es contractual.

* A elegir del muestreo en oficina de la promotora.